



Kyle House, Priory Park
Road, Kilburn

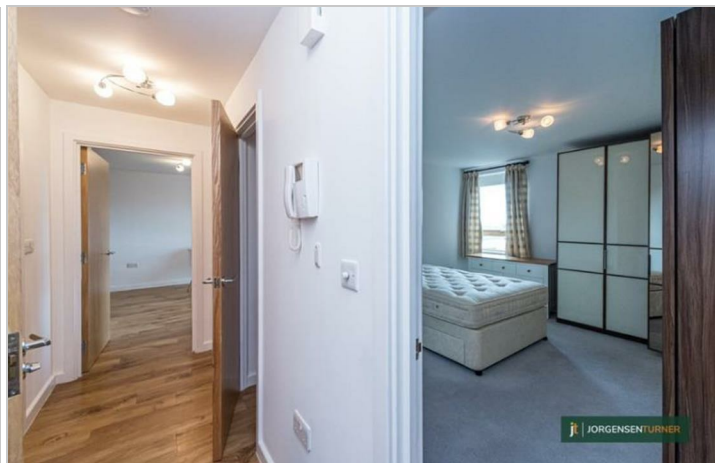
£1,898 Per Month



 1
  1
  1
  C

Kyle House, Priory Park Road, Kilburn

£1,898 Per Month



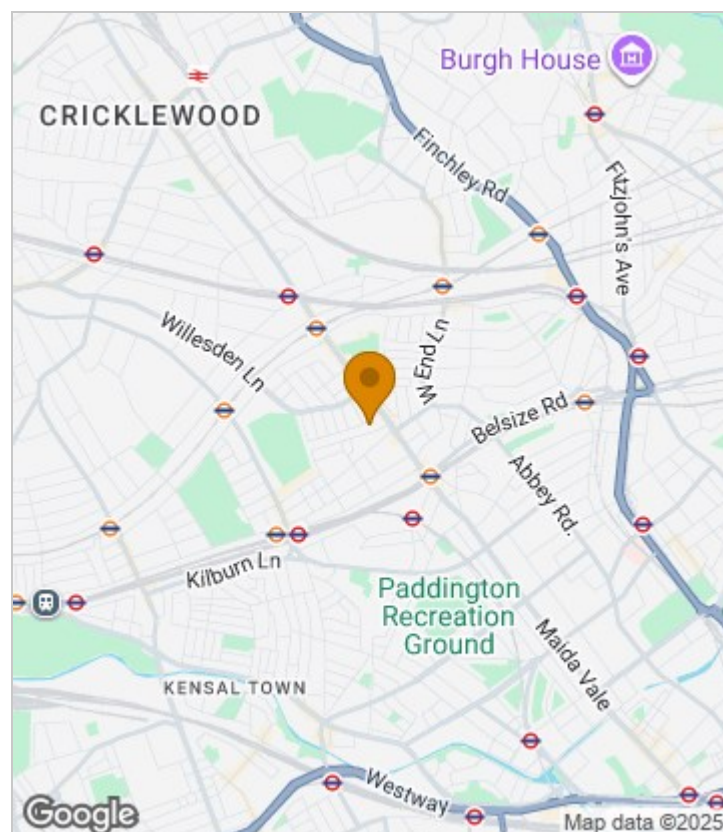
Summary Description

Modern one bedroom flat located in new build available from 23rd of December. Offered in very good condition throughout the property boasts a spacious double bedroom that comes with huge wardrobe, fully fitted modern kitchen semi open plan to large bright reception leading to a balcony with an amazing view. The property offers a fully fitted modern bathroom, more storage space in the hallway, double glazed windows, is located in a secure building. Comes fully furnished.

One week's holding deposit required, 5 weeks damage deposit required, EPC rating C, council tax band C.

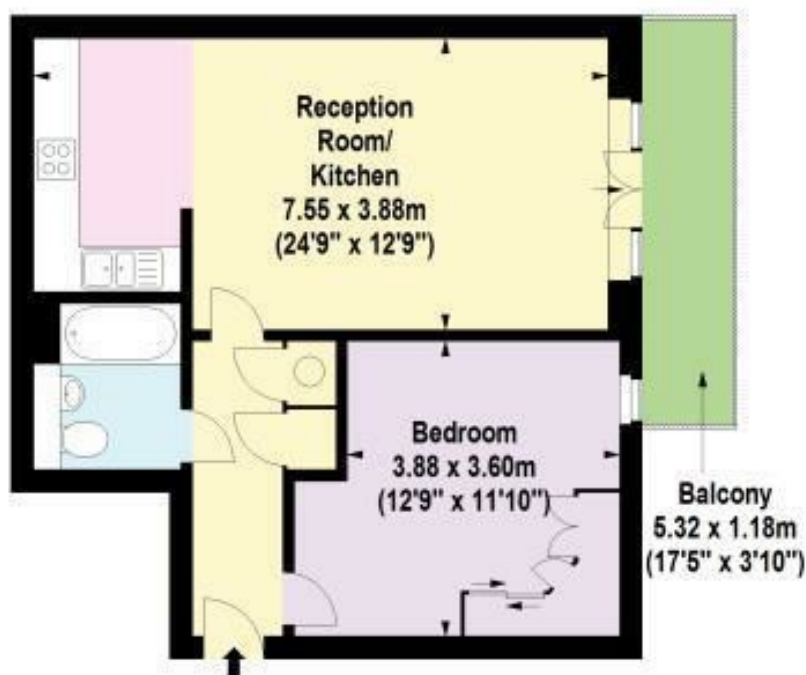
To organise a viewing please call Jorgensen Turner estate agents.

Area Map





Floor Plan



Fifth Floor

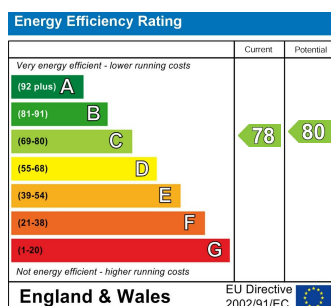
For Identification Purposes Only. Not To Scale. © www.totalvista.uk 2021

Kyle House, NW6

Approx. Gross Internal Area
56.02 Sq M - 603 Sq Ft

TOTALVISTA

Energy Efficiency Graph



Viewing

Please contact our Lettings QP Office on 0207 604 4040 if you wish to arrange a viewing appointment for this property or require further information.

- Balcony
- Furnished
- Double glazed windows
- Modern fittings
- Fifth floor with lift
- Great location

For further information contact:

Lettings QP, 2a Brondesbury Road, London, NW6 6AS

Tel: 0207 604 4040 Email: info@jorgensenturner.com <https://www.jorgensenturner.com/>

Disclaimer

These particulars, whilst believed to be accurate are set out as a general outline only for guidance and do not constitute any part of an offer or contract. Intending purchasers should not rely on them as statements of representation of fact, but must satisfy themselves by inspection or otherwise as to their accuracy. No person in this firm's employment has the authority to make or give any representation or warranty in respect of the property.